

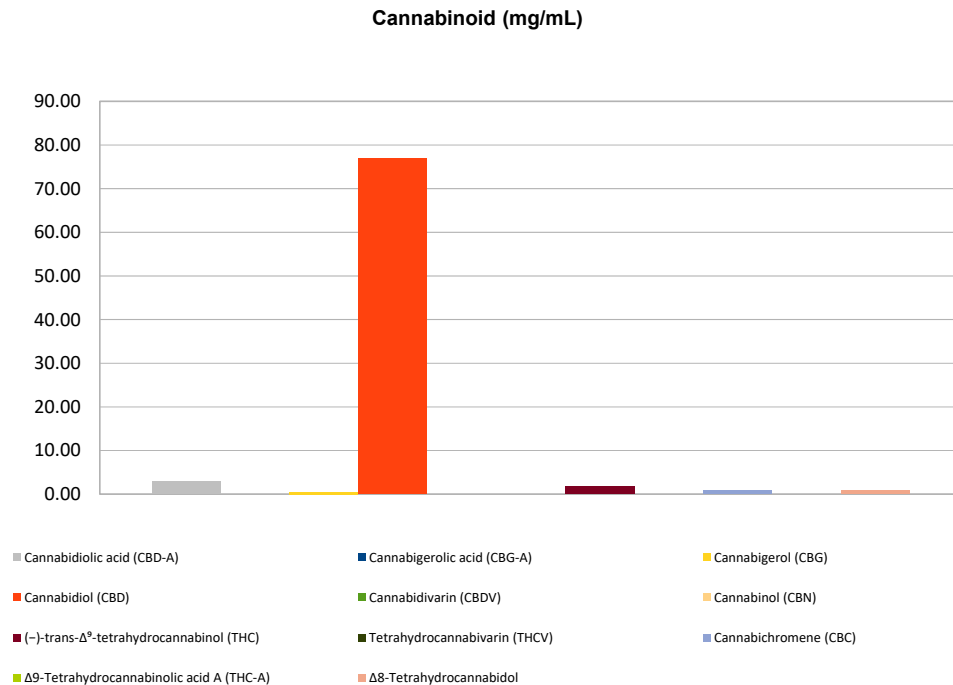


Cannabinoid Profile

Customer: Fountain of Health
Customer Sample ID: Tropical Mango 1,000/2,000 mg
Laboratory Number: 201811-0495
Extraction Technician: MF
Analytical Chemist: GB
Density (g/mL): 0.952

Extraction Date(s):	Analysis Date(s)
11/26/2018	11/26/2018

Cannabinoid (HPLC)	Results		
	LOD (mg/g)	Percent	mg/mL
Δ8-Tetrahydrocannabinol		0.090%	0.85
Cannabidiolic acid (CBD-A)		0.304%	2.89
Cannabigerolic acid (CBG-A)	<0.2		
Cannabigerol (CBG)		0.050%	0.48
Cannabidiol (CBD)		8.084%	76.93
Cannabidivarin (CBDV)	<0.2		
Cannabinol (CBN)	<0.2		
(-)-trans-Δ ⁹ -tetrahydrocannabinol (THC)		0.185%	1.76
Tetrahydrocannabivarin (THCV)	<0.2		
Cannabichromene (CBC)		0.079%	0.75
Δ9-Tetrahydrocannabinolic acid A (THC-A)	<0.2		
Cannabinoids Total		Percent	mg/g
Max Active THC		0.18%	1.85
Max Active CBD		8.35%	83.51
T. Active Cannabinoids		8.49%	84.88
Total Cannabinoids		8.79%	87.92
Ratios			
	45.38	:1 CBD to THC	0.02 :1 THC to CBD



Altitude Consulting, LLC utilizes NIST traceable Reference Standards and Certified Reference Material to calibrate analytical instruments along with proven analytical methods. The methods are applied in the most ethical manner following good laboratory practice guidelines. The results of this report are based solely on the sample submitted and cannot be reproduced.