



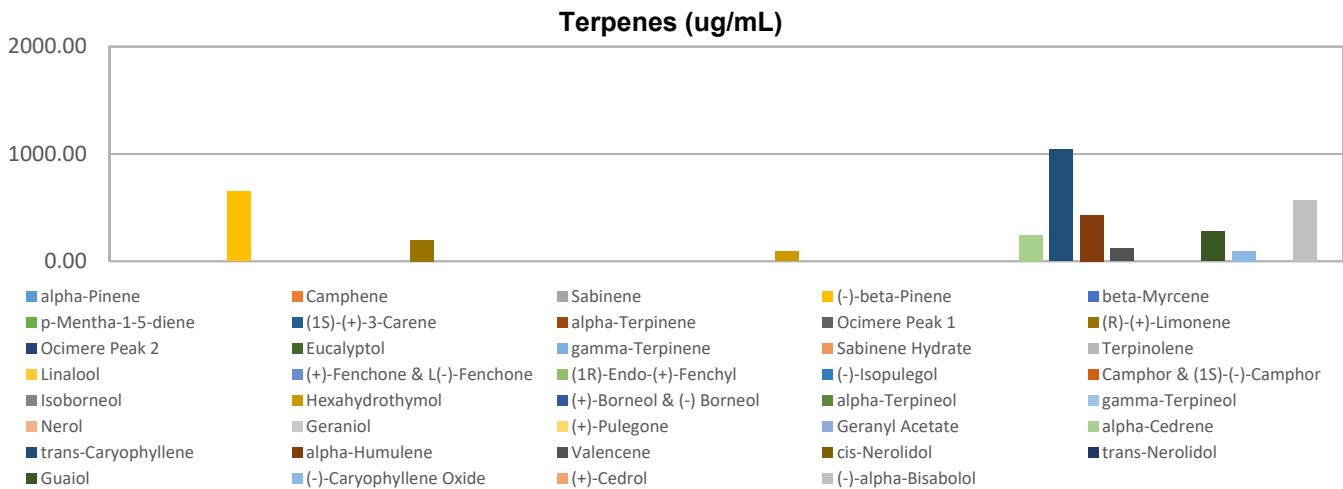
# Terpenes Profile

Customer Sample ID: Tropical Mango 1,000/2,000 mg  
 Laboratory Number: 201811-0495  
 Extraction Technician: MF  
 Analytical Chemist: GB

Extraction Date(s): 11/26/2018  
 Analysis Date(s): 11/26/2018

Terpene	Results	Terpene	Results
	ug/mL		ug/mL
alpha-Pinene		Isoborneol	
Camphene		Hexahydrothymol	88.80
Sabinene		(+)-Borneol & (-) Borneol	
(-)-beta-Pinene	649.49	alpha-Terpineol	
beta-Myrcene		gamma-Terpineol	
p-Mentha-1-5-diene		Nerol	
(1S)-(+)-3-Carene		Geraniol	
alpha-Terpinene		(+)-Pulegone	
Ocimere Peak 1		Geranyl Acetate	
(R)-(+)-Limonene	199.37	alpha-Cedrene	245.52
Ocimere Peak 2		trans-Caryophyllene	1039.53
Eucalyptol		alpha-Humulene	428.35
gamma-Terpinene		Valencene	118.41
Sabinene Hydrate		cis-Nerolidol	
Terpinolene		trans-Nerolidol	
Linalool		Guaiol	278.60
(+)-Fenchone & L(-)-Fenchone		(-)-Caryophyllene Oxide	95.77
(1R)-Endo-(+)-Fenchyl		(+)-Cedrol	
(-)-Isopulegol		(-)-alpha-Bisabolol	571.13
Camphor & (1S)-(-)-Camphor			

Empty result indicates data is less than detection limit. Reporting Limit is roughly 1.0 ug/g depending on amount extracted.



Altitude Consulting, LLC utilizes NIST traceable Reference Standards and Certified Reference Material to calibrate analytical instruments along with proven analytical methods. The methods are applied in the most ethical manner following good laboratory practice guidelines. The results of this report are based solely on the sample submitted and cannot be reproduced.