



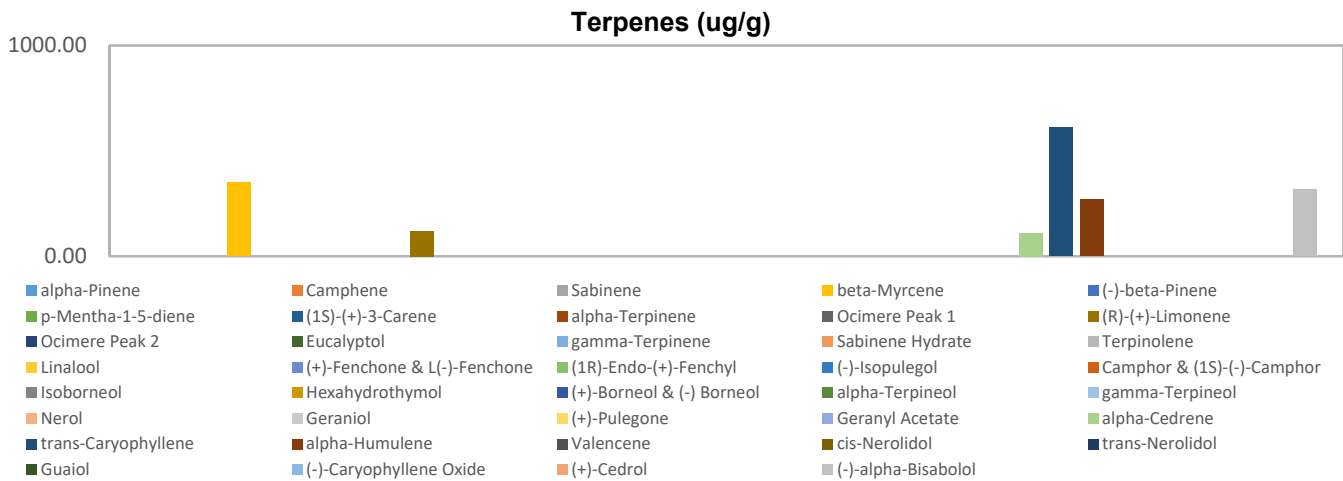
# Terpenes Profile

**Customer:** Foutain of Health  
**Customer Sample ID:** 500mg Mint/Chocolate  
**Laboratory Number:** 201812-0094  
**Extraction Technician:** MF  
**Analytical Chemist:** GB

Extraction Date(s)	Analysis Date(s)
12/3/2018	12/3/2018

Terpene	Results ug/g	Terpene	Results ug/g
alpha-Pinene		Isoborneol	
Camphene		Hexahydrothymol	
Sabinene		(+)-Borneol & (-) Borneol	
beta-Myrcene	349.86	alpha-Terpineol	
(-)-beta-Pinene		gamma-Terpineol	
p-Mentha-1-5-diene		Nerol	
(1S)-(+)-3-Carene		Geraniol	
alpha-Terpinene		(+)-Pulegone	
Ocimere Peak 1		Geranyl Acetate	
(R)-(+)-Limonene	119.03	alpha-Cedrene	110.01
Ocimere Peak 2		trans-Caryophyllene	610.46
Eucalyptol		alpha-Humulene	266.91
gamma-Terpinene		Valencene	
Sabinene Hydrate		cis-Nerolidol	
Terpinolene		trans-Nerolidol	
Linalool		Guaiol	
(+)-Fenchone & L(-)-Fenchone		(-)-Caryophyllene Oxide	
(1R)-Endo-(+)-Fenchyl		(+)-Cedrol	
(-)-Isopulegol		(-)-alpha-Bisabolol	317.40
Camphor & (1S)-(-)-Camphor			

Empty result indicates data is less than detection limit. Reporting Limit is roughly 40 ug/g depending on amount extracted.



Altitude Consulting, LLC utilizes NIST traceable Reference Standards and Certified Reference Material to calibrate analytical instruments along with proven analytical methods. The methods are applied in the most ethical manner following good laboratory practice guidelines. The results of this report are based solely on the sample submitted and cannot be reproduced.