



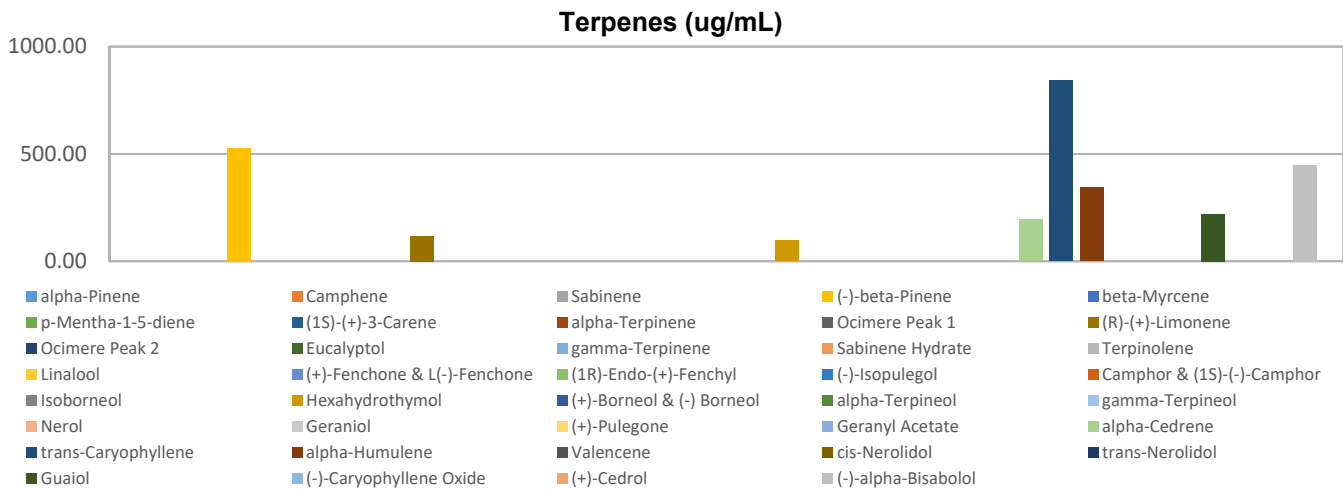
# Terpenes Profile

Customer Sample ID: Unflavored 1,000/2,000 mg  
 Laboratory Number: 201811-0496  
 Extraction Technician: MF  
 Analytical Chemist: GB

Extraction Date(s): 11/26/2018  
 Analysis Date(s): 11/26/2018

Terpene	Results	Terpene	Results
	ug/mL		ug/mL
alpha-Pinene		Isoborneol	
Camphene		Hexahydrothymol	96.01
Sabinene		(+)-Borneol & (-) Borneol	
(-)-beta-Pinene	528.04	alpha-Terpineol	
beta-Myrcene		gamma-Terpineol	
p-Mentha-1-5-diene		Nerol	
(1S)-(+)-3-Carene		Geraniol	
alpha-Terpinene		(+)-Pulegone	
Ocimere Peak 1		Geranyl Acetate	
(R)-(+)-Limonene	118.60	alpha-Cedrene	194.84
Ocimere Peak 2		trans-Caryophyllene	841.47
Eucalyptol		alpha-Humulene	343.55
gamma-Terpinene		Valencene	
Sabinene Hydrate		cis-Nerolidol	
Terpinolene		trans-Nerolidol	
Linalool		Guaiol	220.25
(+)-Fenchone & L(-)-Fenchone		(-)-Caryophyllene Oxide	
(1R)-Endo-(+)-Fenchyl		(+)-Cedrol	
(-)-Isopulegol		(-)-alpha-Bisabolol	448.97
Camphor & (1S)-(-)-Camphor			

Empty result indicates data is less than detection limit. Reporting Limit is roughly 1.0 ug/g depending on amount extracted.



Altitude Consulting, LLC utilizes NIST traceable Reference Standards and Certified Reference Material to calibrate analytical instruments along with proven analytical methods. The methods are applied in the most ethical manner following good laboratory practice guidelines. The results of this report are based solely on the sample submitted and cannot be reproduced.