



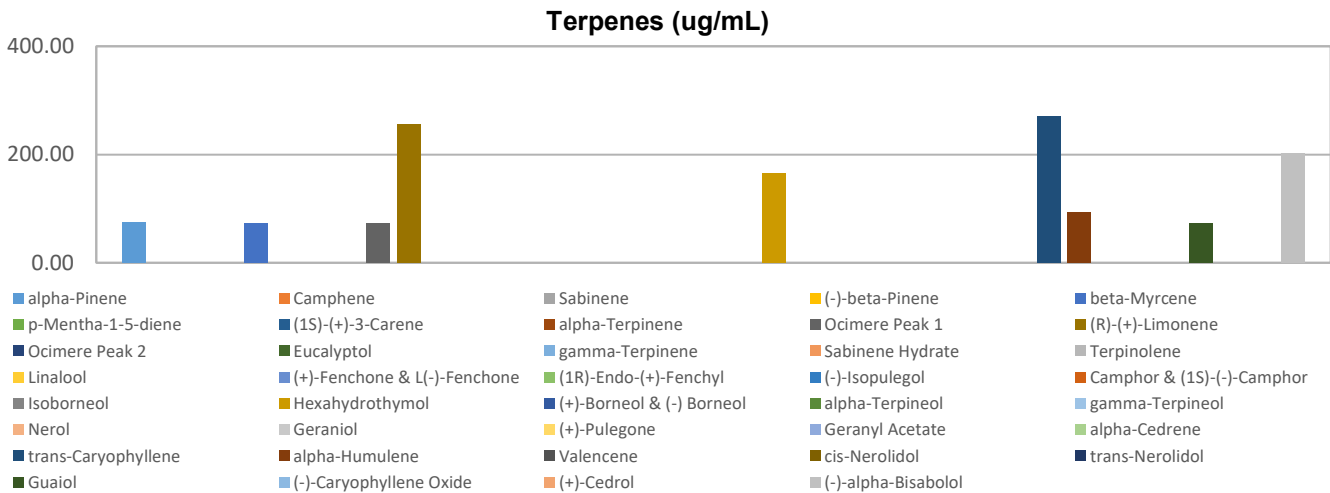
# Terpenes Profile

**Customer:** Fountain of Health  
**Customer Sample ID:** Mint Choc. 2000mg  
**Laboratory Number:** 201903-0730  
**Extraction Technician:** MTO  
**Analytical Chemist:** GB  
**Density (g/mL):** 0.955

Extraction Date(s):	Analysis Date(s)
3/13/2019	3/13/2019

Terpene	Results ug/mL	Terpene	Results ug/mL
alpha-Pinene	75.07	Isoborneol	
Camphene		Hexahydrothymol	165.45
Sabinene		(+)-Borneol & (-) Borneol	
(-)-beta-Pinene		alpha-Terpineol	
beta-Myrcene	73.95	gamma-Terpineol	
p-Mentha-1-5-diene		Nerol	
(1S)-(+)-3-Carene		Geraniol	
alpha-Terpinene		(+)-Pulegone	
Ocimere Peak 1	73.95	Geranyl Acetate	
(R)-(+)-Limonene	255.84	alpha-Cedrene	
Ocimere Peak 2		trans-Caryophyllene	270.03
Eucalyptol		alpha-Humulene	94.12
gamma-Terpinene		Valencene	
Sabinene Hydrate		cis-Nerolidol	
Terpinolene		trans-Nerolidol	
Linalool		Guaial	72.46
(+)-Fenchone & L(-)-Fenchone		(-)-Caryophyllene Oxide	
(1R)-Endo-(+)-Fenchyl		(+)-Cedrol	
(-)-Isopulegol		(-)-alpha-Bisabolol	201.31
Camphor & (1S)-(-)-Camphor			

Empty result indicates data is less than detection limit. Reporting Limit is roughly 100 ug/g depending on amount extracted.



Altitude Consulting, LLC utilizes NIST traceable Reference Standards and Certified Reference Material to calibrate analytical instruments along with proven analytical methods. The methods are applied in the most ethical manner following good laboratory practice guidelines. The results of this report are based solely on the sample submitted and cannot be reproduced.



This report expires 30 days after analysis date.

# Terpenes Profile