



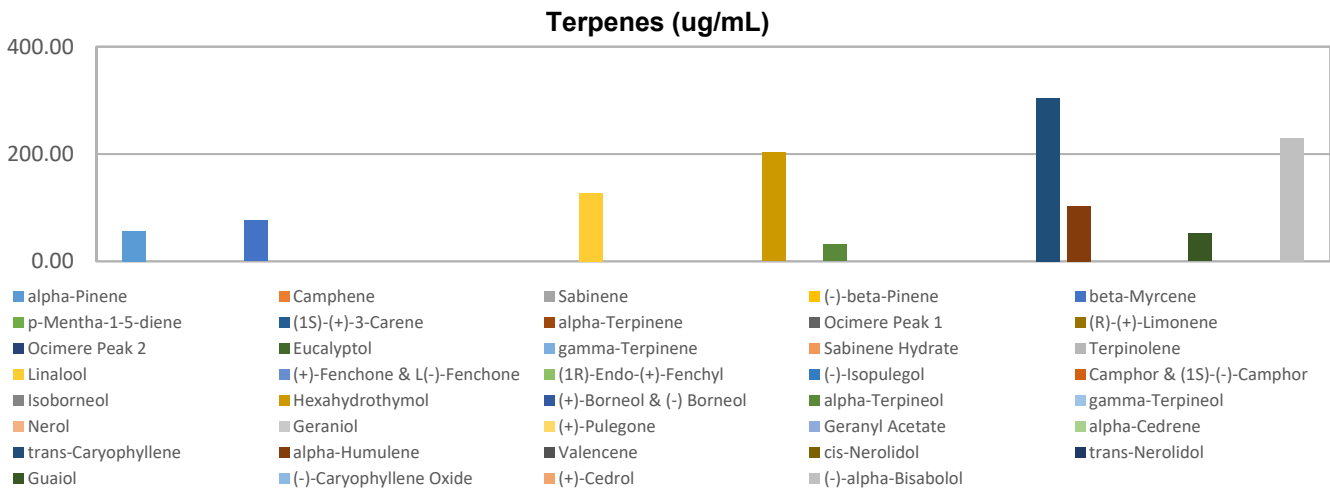
Terpenes Profile

Customer: Fountain of Health
Customer Sample ID: EV.MintChoc 50013.031319-2
Laboratory Number: 201903-1146
Extraction Technician: DF
Analytical Chemist: GB
Density (g/mL): 0.947

Extraction Date(s)	Analysis Date(s)
3/22/2019	3/22/2019

Terpene	Results	Terpene	Results
	ug/mL		ug/mL
alpha-Pinene	56.65	Isoborneol	
Camphene		Hexahydrothymol	202.80
Sabinene		(+)-Borneol & (-) Borneol	
(-)-beta-Pinene		alpha-Terpineol	31.35
beta-Myrcene	76.29	gamma-Terpineol	
p-Mentha-1-5-diene		Nerol	
(1S)-(+)-3-Carene		Geraniol	
alpha-Terpinene		(+)-Pulegone	
Ocimere Peak 1		Geranyl Acetate	
(R)-(+)-Limonene		alpha-Cedrene	
Ocimere Peak 2		trans-Caryophyllene	304.96
Eucalyptol		alpha-Humulene	102.91
gamma-Terpinene		Valencene	
Sabinene Hydrate		cis-Nerolidol	
Terpinolene		trans-Nerolidol	
Linalool	127.27	Guaiol	52.12
(+)-Fenchone & L(-)-Fenchone		(-)-Caryophyllene Oxide	
(1R)-Endo-(+)-Fenchyl		(+)-Cedrol	
(-)-Isopulegol		(-)-alpha-Bisabolol	229.05
Camphor & (1S)-(-)-Camphor			

Empty result indicates data is less than detection limit. Reporting Limit is roughly 100 ug/mL depending on amount extracted.



Altitude Consulting, LLC utilizes NIST traceable Reference Standards and Certified Reference Material to calibrate analytical instruments along with proven analytical methods. The methods are applied in the most ethical manner following good laboratory practice guidelines. The results of this report are based solely on the sample submitted and cannot be reproduced.

This report expires 30 days after analysis date.