



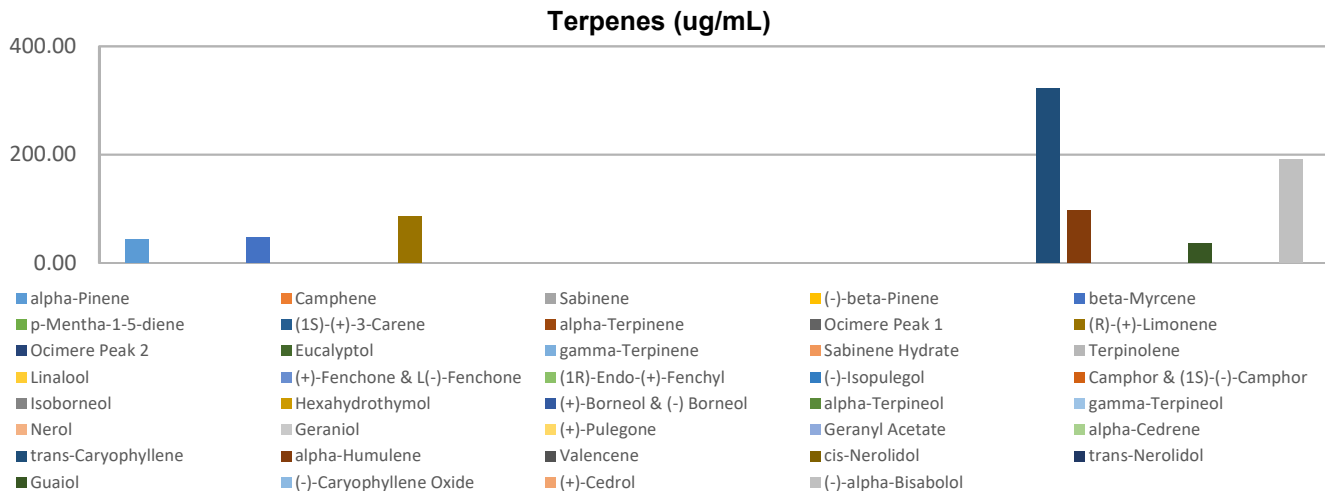
Terpenes Profile

Customer: Fountain of Health
Customer Sample ID: EV.FOH513.032819
Laboratory Number: 201904-0092
Extraction Technician: DF
Analytical Chemist: MF
Density (g/mL): 0.940

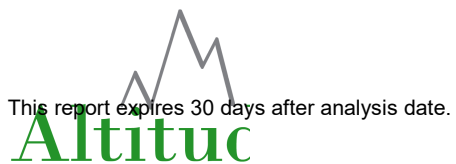
Extraction Date(s)	Analysis Date(s)
4/2/2019	4/2/2019

Terpene	Results ug/mL	Terpene	Results ug/mL
alpha-Pinene	44.18	Isoborneol	
Camphene		Hexahydrothymol	
Sabinene		(+)-Borneol & (-) Borneol	
(-)-beta-Pinene		alpha-Terpineol	
beta-Myrcene	46.78	gamma-Terpineol	
p-Mentha-1-5-diene		Nerol	
(1S)-(+)-3-Carene		Geraniol	
alpha-Terpinene		(+)-Pulegone	
Ocimere Peak 1		Geranyl Acetate	
(R)-(+)-Limonene	85.39	alpha-Cedrene	
Ocimere Peak 2		trans-Caryophyllene	321.50
Eucalyptol		alpha-Humulene	96.52
gamma-Terpinene		Valencene	
Sabinene Hydrate		cis-Nerolidol	
Terpinolene		trans-Nerolidol	
Linalool		Guaiol	36.38
(+)-Fenchone & L(-)-Fenchone		(-)-Caryophyllene Oxide	
(1R)-Endo-(+)-Fenchyl		(+)-Cedrol	
(-)-Isopulegol		(-)-alpha-Bisabolol	192.12
Camphor & (1S)-(-)-Camphor			

Empty result indicates data is less than detection limit. Reporting Limit is roughly 100 ug/mL depending on amount extracted.



Altitude Consulting, LLC utilizes NIST traceable Reference Standards and Certified Reference Material to calibrate analytical instruments along with proven analytical methods. The methods are applied in the most ethical manner following good laboratory practice guidelines. The results of this report are based solely on the sample submitted and cannot be reproduced.



Terpenes Profile