



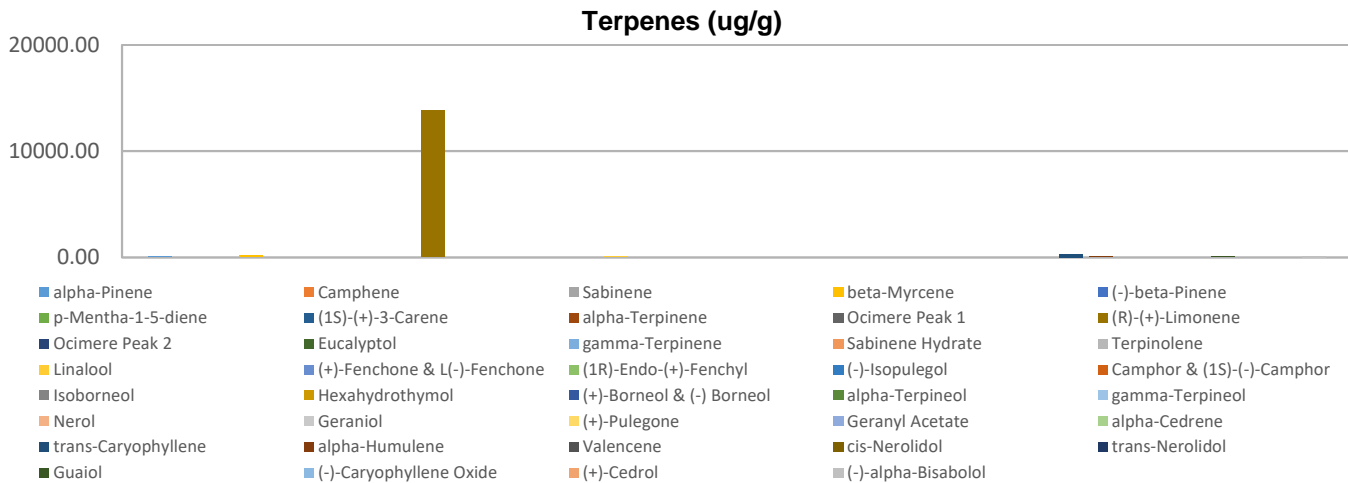
# Terpenes Profile

**Customer:** Fountain of Health  
**Customer Sample ID:** CV.FOHB0.513.041219 Batch ID: 9890  
**Laboratory Number:** 201904-1311  
**Extraction Technician:** DF  
**Analytical Chemist:** MF

Extraction Date(s)	Analysis Date(s)
4/25/2019	4/26/2019

Terpene	Results ug/g	Terpene	Results ug/g
alpha-Pinene	88.11	Isoborneol	
Camphene		Hexahydrothymol	
Sabinene		(+)-Borneol & (-) Borneol	
beta-Myrcene	168.53	alpha-Terpineol	
(-)-beta-Pinene		gamma-Terpineol	
p-Mentha-1-5-diene		Nerol	
(1S)-(+)-3-Carene		Geraniol	
alpha-Terpinene		(+)-Pulegone	
Ocimere Peak 1		Geranyl Acetate	
(R)-(+)-Limonene	13847.25	alpha-Cedrene	
Ocimere Peak 2		trans-Caryophyllene	306.27
Eucalyptol		alpha-Humulene	111.20
gamma-Terpinene		Valencene	
Sabinene Hydrate		cis-Nerolidol	
Terpinolene		trans-Nerolidol	
Linalool	65.41	Guaiol	68.10
(+)-Fenchone & L(-)-Fenchone		(-)-Caryophyllene Oxide	
(1R)-Endo-(+)-Fenchyl		(+)-Cedrol	
(-)-Isopulegol		(-)-alpha-Bisabolol	131.20
Camphor & (1S)-(-)-Camphor			

Empty result indicates data is less than detection limit. Reporting Limit is roughly 40 ug/g depending on amount extracted.



Altitude Consulting, LLC utilizes NIST traceable Reference Standards and Certified Reference Material to calibrate analytical instruments along with proven analytical methods. The methods are applied in the most ethical manner following good laboratory practice guidelines. The results of this report are based solely on the sample submitted and cannot be reproduced.



This report expires 30 days after analysis date.

# Terpenes Profile