



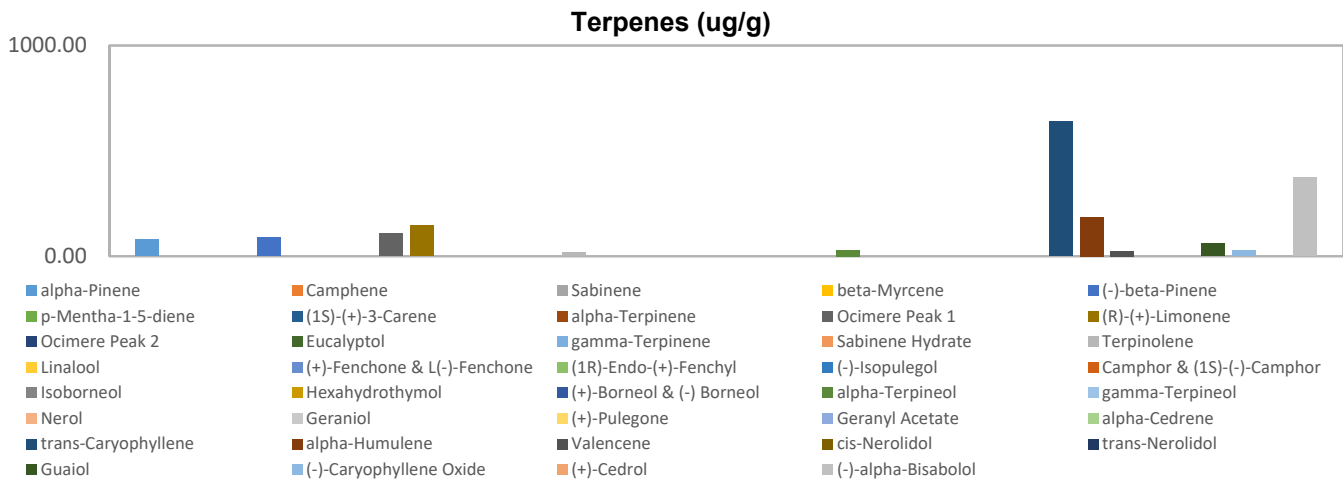
Terpenes Profile

Customer: Fountain of Health
Customer Sample ID: EV.FOH10132027.032219
Laboratory Number: 201903-1456
Extraction Technician: MTO
Analytical Chemist: GB

Extraction Date(s)	Analysis Date(s)
3/28/2019	3/28/2019

Terpene	Results ug/g	Terpene	Results ug/g
alpha-Pinene	80.16	Isoborneol	
Camphene		Hexahydrothymol	
Sabinene		(+)-Borneol & (-) Borneol	
beta-Myrcene		alpha-Terpineol	28.64
(-)-beta-Pinene	87.47	gamma-Terpineol	
p-Mentha-1-5-diene		Nerol	
(1S)-(+)-3-Carene		Geraniol	
alpha-Terpinene		(+)-Pulegone	
Ocimere Peak 1	107.27	Geranyl Acetate	
(R)-(+)-Limonene	145.52	alpha-Cedrene	
Ocimere Peak 2		trans-Caryophyllene	638.99
Eucalyptol		alpha-Humulene	186.27
gamma-Terpinene		Valencene	23.84
Sabinene Hydrate		cis-Nerolidol	
Terpinolene	19.22	trans-Nerolidol	
Linalool		Guaiol	59.59
(+)-Fenchone & L(-)-Fenchone		(-)-Caryophyllene Oxide	26.53
(1R)-Endo-(+)-Fenchyl		(+)-Cedrol	
(-)-Isopulegol		(-)-alpha-Bisabolol	371.78
Camphor & (1S)-(-)-Camphor			

Empty result indicates data is less than detection limit. Reporting Limit is roughly 40 ug/g depending on amount extracted.



Altitude Consulting, LLC utilizes NIST traceable Reference Standards and Certified Reference Material to calibrate analytical instruments along with proven analytical methods. The methods are applied in the most ethical manner following good laboratory practice guidelines. The results of this report are based solely on the sample submitted and cannot be reproduced.

This report expires 30 days after analysis date.