



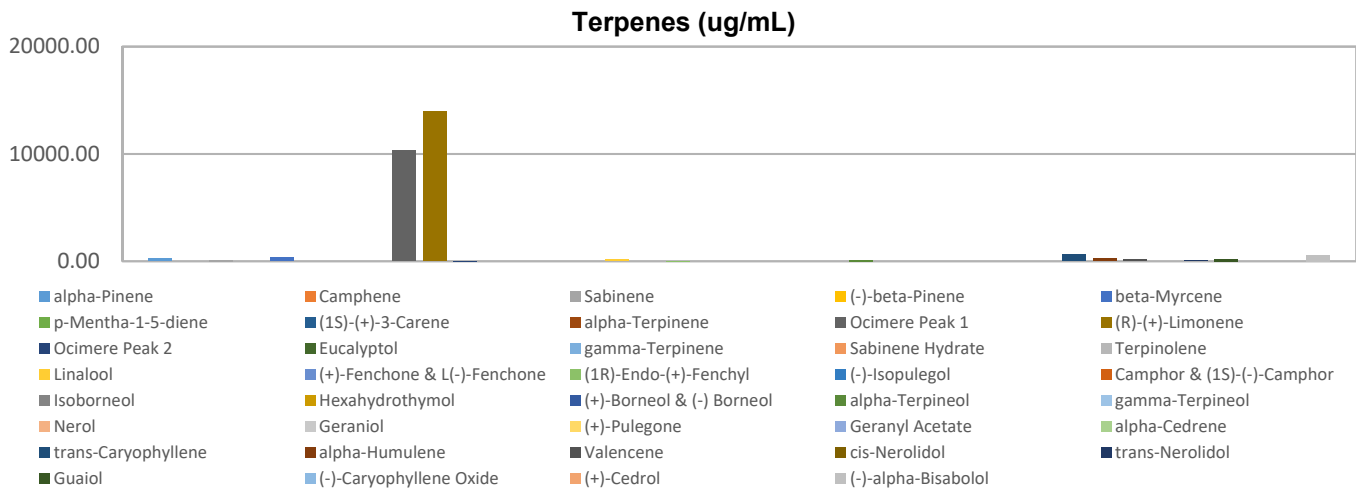
# Terpenes Profile

Customer Sample ID: 1000 mg Blood Orange  
 Laboratory Number: 201902-0217  
 Extraction Technician: DF  
 Analytical Chemist: GB

| Extraction Date(s) | Analysis Date(s) |
|--------------------|------------------|
| 2/7/2019           | 2/7/2019         |

| Terpene                      | Results ug/mL | Terpene                   | Results ug/mL |
|------------------------------|---------------|---------------------------|---------------|
| alpha-Pinene                 | 233.43        | Isoborneol                |               |
| Camphene                     |               | Hexahydrothymol           |               |
| Sabinene                     | 129.35        | (+)-Borneol & (-) Borneol |               |
| (-)-beta-Pinene              |               | alpha-Terpineol           | 94.41         |
| beta-Myrcene                 | 350.52        | gamma-Terpineol           |               |
| p-Mentha-1-5-diene           |               | Nerol                     |               |
| (1S)-(+)-3-Carene            |               | Geraniol                  |               |
| alpha-Terpinene              |               | (+)-Pulegone              |               |
| Ocimere Peak 1               | 10289.88      | Geranyl Acetate           |               |
| (R)-(+)-Limonene             | 13931.10      | alpha-Cedrene             |               |
| Ocimere Peak 2               | 42.75         | trans-Caryophyllene       | 637.10        |
| Eucalyptol                   |               | alpha-Humulene            | 240.86        |
| gamma-Terpinene              |               | Valencene                 | 171.36        |
| Sabinene Hydrate             |               | cis-Nerolidol             |               |
| Terpinolene                  |               | trans-Nerolidol           | 53.15         |
| Linalool                     | 147.57        | Guaiol                    | 195.52        |
| (+)-Fenchone & L(-)-Fenchone |               | (-)-Caryophyllene Oxide   |               |
| (1R)-Endo-(+)-Fenchyl        | 41.63         | (+)-Cedrol                |               |
| (-)-Isopulegol               |               | (-)-alpha-Bisabolol       | 576.88        |
| Camphor & (1S)-(-)-Camphor   |               |                           |               |

Empty result indicates data is less than detection limit. Reporting Limit is roughly 1.0 ug/g depending on amount extracted.



Altitude Consulting, LLC utilizes NIST traceable Reference Standards and Certified Reference Material to calibrate analytical instruments along with proven analytical methods. The methods are applied in the most ethical manner following good laboratory practice guidelines. The results of this report are based solely on the sample submitted and cannot be reproduced.

This report expires 30 days after analysis date.