



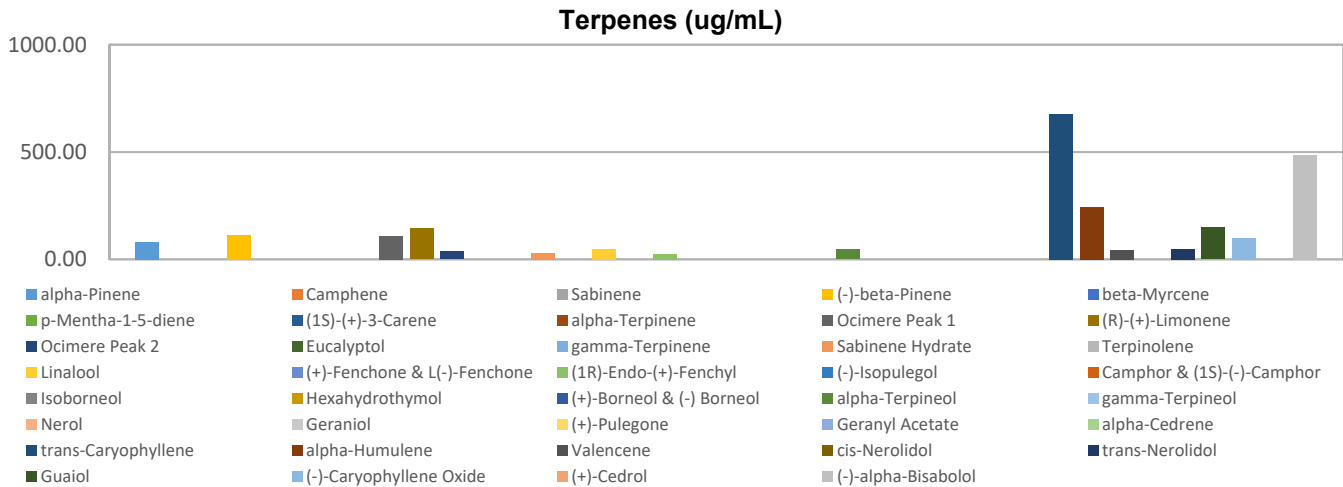
Terpenes Profile

Customer: Fountain of Health
Customer Sample ID: EV.FOHMANGO10132027.050219 Batch ID: 9867
Laboratory Number: 201905-0436
Extraction Technician: CB
Analytical Chemist: GB
Density (g/mL): 0.992

Extraction Date(s)	Analysis Date(s)
5/13/2019	5/14/2019

Terpene	Results	Terpene	Results
	ug/mL		ug/mL
alpha-Pinene	81.48	Isoborneol	
Camphene		Hexahydrothymol	
Sabinene		(+)-Borneol & (-) Borneol	
(-)-beta-Pinene	114.27	alpha-Terpineol	45.83
beta-Myrcene		gamma-Terpineol	
p-Mentha-1-5-diene		Nerol	
(1S)-(+)-3-Carene		Geraniol	
alpha-Terpinene		(+)-Pulegone	
Ocimere Peak 1	108.98	Geranyl Acetate	
(R)-(+)-Limonene	143.61	alpha-Cedrene	
Ocimere Peak 2	36.05	trans-Caryophyllene	675.66
Eucalyptol		alpha-Humulene	243.42
gamma-Terpinene		Valencene	44.61
Sabinene Hydrate	28.52	cis-Nerolidol	
Terpinolene		trans-Nerolidol	46.65
Linalool	48.68	Guaiol	148.70
(+)-Fenchone & L(-)-Fenchone		(-)-Caryophyllene Oxide	98.59
(1R)-Endo-(+)-Fenchyl	23.42	(+)-Cedrol	
(-)-Isopulegol		(-)-alpha-Bisabolol	485.00
Camphor & (1S)-(-)-Camphor			

Empty result indicates data is less than detection limit. Reporting Limit is roughly 100 ug/mL depending on amount extracted.



Altitude Consulting, LLC utilizes NIST traceable Reference Standards and Certified Reference Material to calibrate analytical instruments along with proven analytical methods. The methods are applied in the most ethical manner following good laboratory practice guidelines. The results of this report are based solely on the sample submitted and cannot be reproduced.

This report expires 30 days after analysis date.