



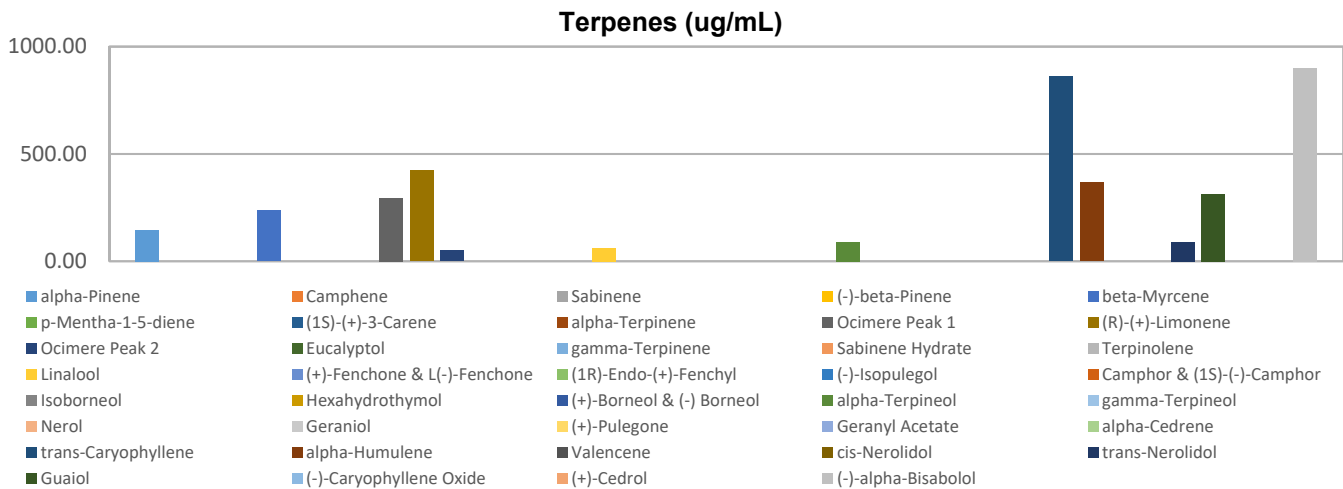
Terpenes Profile

Customer Sample ID: 1000 mg Mango
 Laboratory Number: 201902-0219
 Extraction Technician: DF
 Analytical Chemist: GB

Extraction Date(s)	Analysis Date(s)
2/7/2019	2/7/2019

Terpene	Results ug/mL	Terpene	Results ug/mL
alpha-Pinene	146.45	Isoborneol	
Camphene		Hexahydrothymol	
Sabinene		(+)-Borneol & (-) Borneol	
(-)-beta-Pinene		alpha-Terpineol	90.53
beta-Myrcene	236.60	gamma-Terpineol	
p-Mentha-1-5-diene		Nerol	
(1S)-(+)-3-Carene		Geraniol	
alpha-Terpinene		(+)-Pulegone	
Ocimere Peak 1	295.94	Geranyl Acetate	
(R)-(+)-Limonene	421.85	alpha-Cedrene	
Ocimere Peak 2	48.69	trans-Caryophyllene	861.58
Eucalyptol		alpha-Humulene	367.07
gamma-Terpinene		Valencene	
Sabinene Hydrate		cis-Nerolidol	
Terpinolene		trans-Nerolidol	88.25
Linalool	62.38	Guaiol	312.30
(+)-Fenchone & L(-)-Fenchone		(-)-Caryophyllene Oxide	
(1R)-Endo-(+)-Fenchyl		(+)-Cedrol	
(-)-Isopulegol		(-)-alpha-Bisabolol	899.61
Camphor & (1S)-(-)-Camphor			

Empty result indicates data is less than detection limit. Reporting Limit is roughly 1.0 ug/g depending on amount extracted.



Altitude Consulting, LLC utilizes NIST traceable Reference Standards and Certified Reference Material to calibrate analytical instruments along with proven analytical methods. The methods are applied in the most ethical manner following good laboratory practice guidelines. The results of this report are based solely on the sample submitted and cannot be reproduced.

This report expires 30 days after analysis date.