



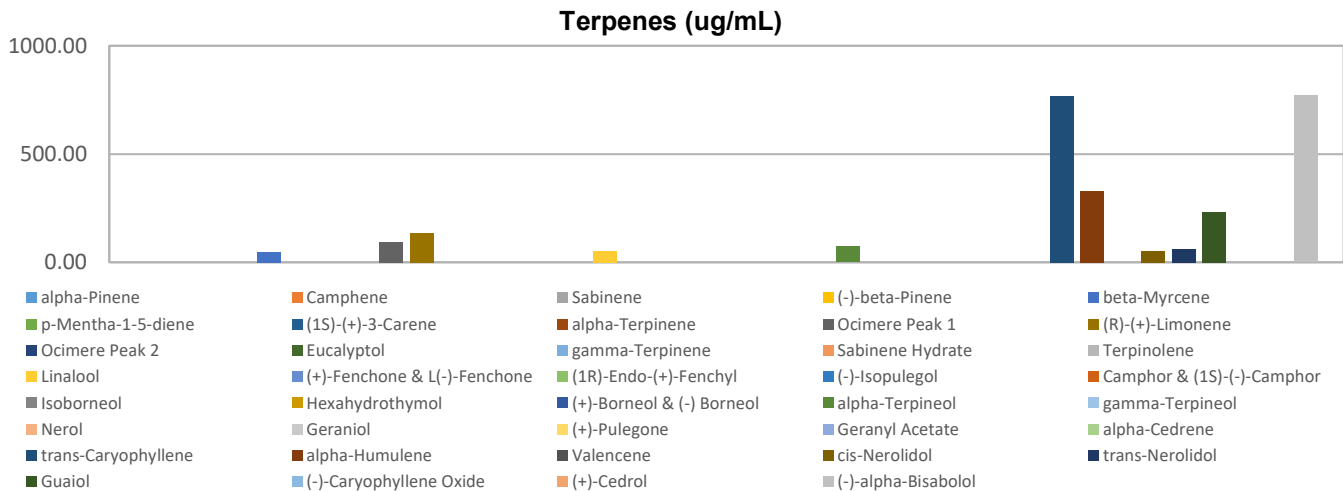
Terpenes Profile

Customer Sample ID: 2000 mg Mango
Laboratory Number: 201902-0215
Extraction Technician: DF
Analytical Chemist: GB
Density (g/mL): 0.938

Extraction Date(s): 2/7/2019
Analysis Date(s): 2/7/2019

Terpene	Results	Terpene	Results
	ug/mL		ug/mL
alpha-Pinene		Isoborneol	
Camphene		Hexahydrothymol	
Sabinene		(+)-Borneol & (-) Borneol	
(-)-beta-Pinene		alpha-Terpineol	71.55
beta-Myrcene	49.17	gamma-Terpineol	
p-Mentha-1-5-diene		Nerol	
(1S)-(+)-3-Carene		Geraniol	
alpha-Terpinene		(+)-Pulegone	
Ocimere Peak 1	92.10	Geranyl Acetate	
(R)-(+)-Limonene	136.13	alpha-Cedrene	
Ocimere Peak 2		trans-Caryophyllene	767.22
Eucalyptol		alpha-Humulene	329.49
gamma-Terpinene		Valencene	
Sabinene Hydrate		cis-Nerolidol	53.20
Terpinolene		trans-Nerolidol	60.17
Linalool	51.73	Guaiol	232.62
(+)-Fenchone & L(-)-Fenchone		(-)-Caryophyllene Oxide	
(1R)-Endo-(+)-Fenchyl		(+)-Cedrol	
(-)-Isopulegol		(-)-alpha-Bisabolol	770.15
Camphor & (1S)-(-)-Camphor			

Empty result indicates data is less than detection limit. Reporting Limit is roughly 1.0 ug/g depending on amount extracted.



Altitude Consulting, LLC utilizes NIST traceable Reference Standards and Certified Reference Material to calibrate analytical instruments along with proven analytical methods. The methods are applied in the most ethical manner following good laboratory practice guidelines. The results of this report are based solely on the sample submitted and cannot be reproduced.

This report expires 30 days after analysis date.