



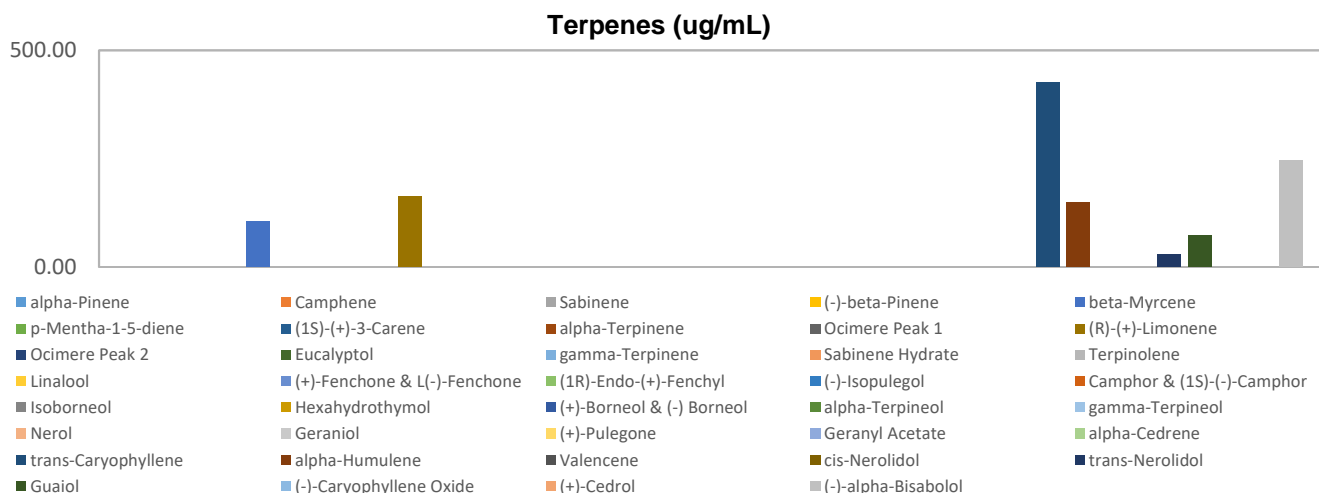
Terpenes Profile

Customer: Fountain of Health
Customer Sample ID: EV1FOHMANGO513.051419 Batch ID: 9853
Laboratory Number: 201905-0514
Extraction Technician: CB
Analytical Chemist: MF
Density (g/mL): 1.036

Extraction Date(s)	Analysis Date(s)
5/15/2019	5/16/2019

Terpene	Results	Terpene	Results
	ug/mL		ug/mL
alpha-Pinene		Isoborneol	
Camphene		Hexahydrothymol	
Sabinene		(+)-Borneol & (-) Borneol	
(-)-beta-Pinene		alpha-Terpineol	
beta-Myrcene	105.51	gamma-Terpineol	
p-Mentha-1-5-diene		Nerol	
(1S)-(+)-3-Carene		Geraniol	
alpha-Terpinene		(+)-Pulegone	
Ocimere Peak 1		Geranyl Acetate	
(R)-(+)-Limonene	163.74	alpha-Cedrene	
Ocimere Peak 2		trans-Caryophyllene	426.92
Eucalyptol		alpha-Humulene	149.66
gamma-Terpinene		Valencene	
Sabinene Hydrate		cis-Nerolidol	
Terpinolene		trans-Nerolidol	29.55
Linalool		Guaiol	71.96
(+)-Fenchone & L(-)-Fenchone		(-)-Caryophyllene Oxide	
(1R)-Endo-(+)-Fenchyl		(+)-Cedrol	
(-)-Isopulegol		(-)-alpha-Bisabolol	245.62
Camphor & (1S)-(-)-Camphor			

Empty result indicates data is less than detection limit. Reporting Limit is roughly 100 ug/mL depending on amount extracted.



Altitude Consulting, LLC utilizes NIST traceable Reference Standards and Certified Reference Material to calibrate analytical instruments along with proven analytical methods. The methods are applied in the most ethical manner following good laboratory practice guidelines. The results of this report are based solely on the sample submitted and cannot be reproduced.



This report expires 30 days after analysis date.

Terpenes Profile