



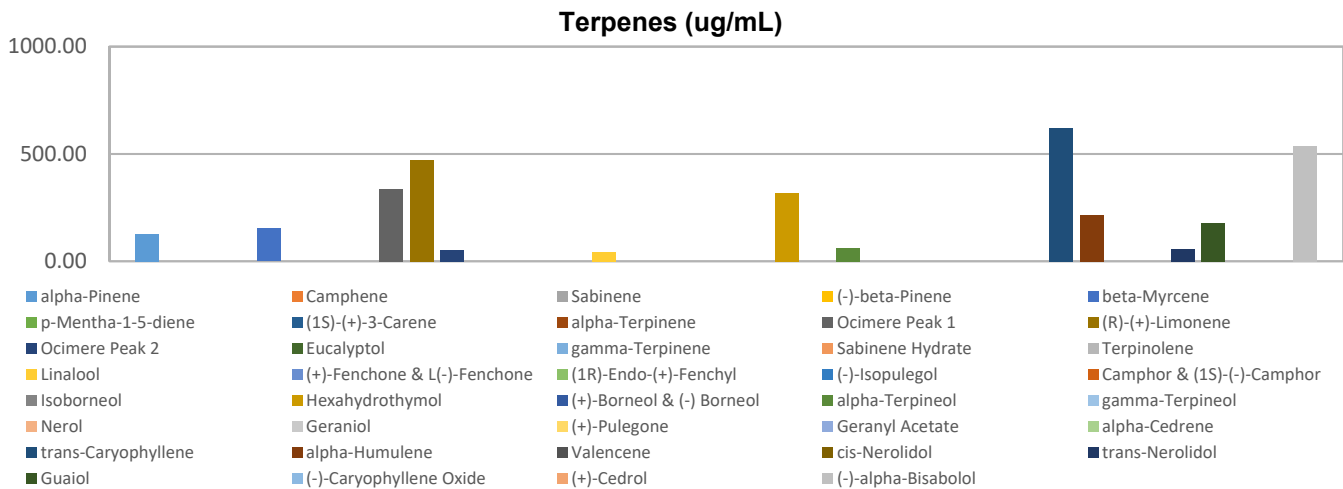
Terpenes Profile

Customer Sample ID: 500 mg Mint Chocolate
 Laboratory Number: 201902-0222
 Extraction Technician: DF
 Analytical Chemist: GB

Extraction Date(s)	Analysis Date(s)
2/7/2019	2/7/2019

Terpene	Results ug/mL	Terpene	Results ug/mL
alpha-Pinene	126.58	Isoborneol	
Camphene		Hexahydrothymol	319.00
Sabinene		(+)-Borneol & (-) Borneol	
(-)-beta-Pinene		alpha-Terpineol	61.83
beta-Myrcene	153.50	gamma-Terpineol	
p-Mentha-1-5-diene		Nerol	
(1S)-(+)-3-Carene		Geraniol	
alpha-Terpinene		(+)-Pulegone	
Ocimere Peak 1	336.45	Geranyl Acetate	
(R)-(+)-Limonene	471.40	alpha-Cedrene	
Ocimere Peak 2	53.47	trans-Caryophyllene	621.62
Eucalyptol		alpha-Humulene	215.69
gamma-Terpinene		Valencene	
Sabinene Hydrate		cis-Nerolidol	
Terpinolene		trans-Nerolidol	57.83
Linalool	43.28	Guaiol	178.59
(+)-Fenchone & L(-)-Fenchone		(-)-Caryophyllene Oxide	
(1R)-Endo-(+)-Fenchyl		(+)-Cedrol	
(-)-Isopulegol		(-)-alpha-Bisabolol	536.87
Camphor & (1S)-(-)-Camphor			

Empty result indicates data is less than detection limit. Reporting Limit is roughly 1.0 ug/g depending on amount extracted.



Altitude Consulting, LLC utilizes NIST traceable Reference Standards and Certified Reference Material to calibrate analytical instruments along with proven analytical methods. The methods are applied in the most ethical manner following good laboratory practice guidelines. The results of this report are based solely on the sample submitted and cannot be reproduced.

This report expires 30 days after analysis date.