



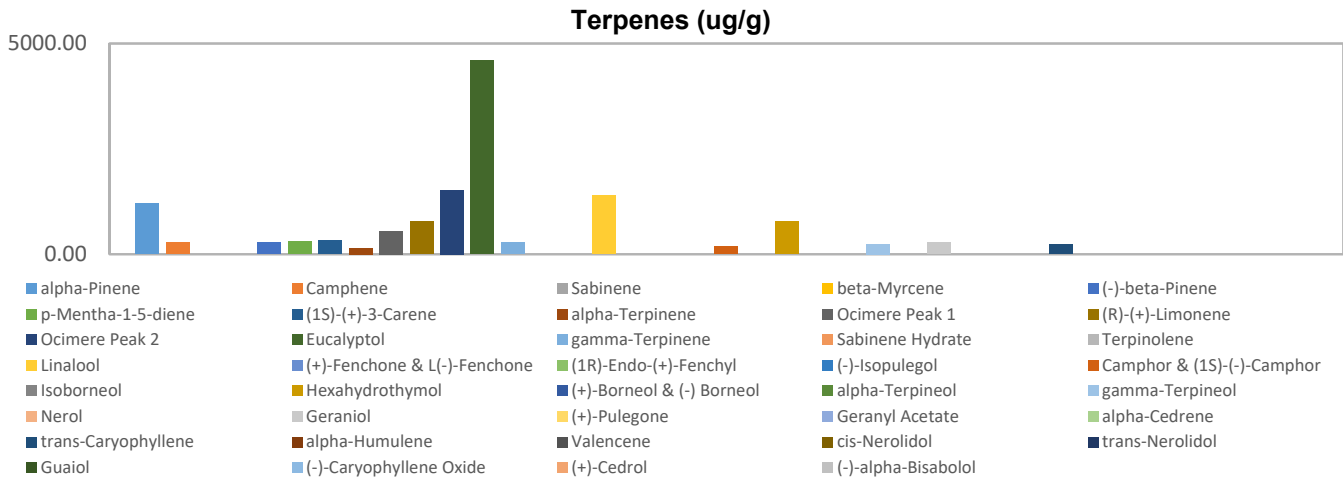
# Terpenes Profile

**Customer:** Fountain of Health  
**Customer Sample ID:** Pain Salve  
**Laboratory Number:** 201903-0878  
**Extraction Technician:** CB  
**Analytical Chemist:** GB

Extraction Date(s)	Analysis Date(s)
3/18/2019	3/18/2019

Terpene	Results ug/g	Terpene	Results ug/g
alpha-Pinene	1206.26	Isoborneol	
Camphene	274.68	Hexahydrothymol	776.15
Sabinene		(+)-Borneol & (-) Borneol	
beta-Myrcene		alpha-Terpineol	
(-)-beta-Pinene	274.68	gamma-Terpineol	238.51
p-Mentha-1-5-diene	290.32	Nerol	
(1S)-(+)-3-Carene	326.49	Geraniol	280.55
alpha-Terpinene	146.63	(+)-Pulegone	
Ocimere Peak 1	550.34	Geranyl Acetate	
(R)-(+)-Limonene	774.19	alpha-Cedrene	
Ocimere Peak 2	1522.97	trans-Caryophyllene	228.74
Eucalyptol	4599.22	alpha-Humulene	
gamma-Terpinene	271.75	Valencene	
Sabinene Hydrate		cis-Nerolidol	
Terpinolene		trans-Nerolidol	
Linalool	1397.85	Guaiol	
(+)-Fenchone & L(-)-Fenchone		(-)-Caryophyllene Oxide	
(1R)-Endo-(+)-Fenchyl		(+)-Cedrol	
(-)-Isopulegol		(-)-alpha-Bisabolol	
Camphor & (1S)-(-)-Camphor	186.71		

Empty result indicates data is less than detection limit. Reporting Limit is roughly 40 ug/g depending on amount extracted.



Altitude Consulting, LLC utilizes NIST traceable Reference Standards and Certified Reference Material to calibrate analytical instruments along with proven analytical methods. The methods are applied in the most ethical manner following good laboratory practice guidelines. The results of this report are based solely on the sample submitted and cannot be reproduced.

This report expires 30 days after analysis date.