



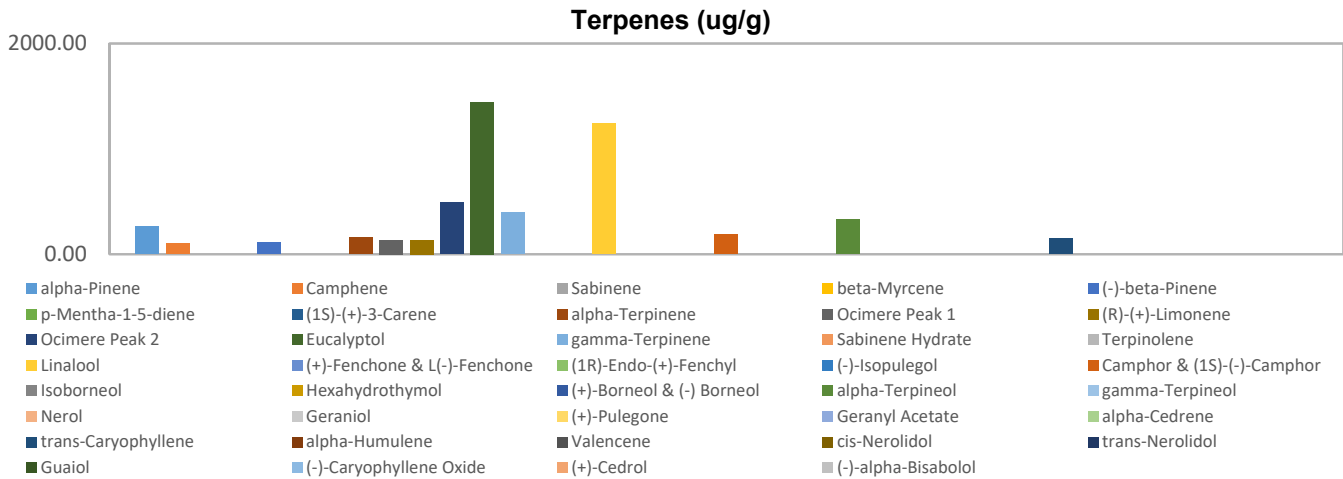
# Terpenes Profile

**Customer:** Fountain of Health  
**Customer Sample ID:** Skin Soothing Salve  
**Laboratory Number:** 201903-0879  
**Extraction Technician:** CB  
**Analytical Chemist:** GB

Extraction Date(s)	Analysis Date(s)
3/18/2019	3/18/2019

Terpene	Results ug/g	Terpene	Results ug/g
alpha-Pinene	261.81	Isoborneol	
Camphene	98.59	Hexahydrothymol	
Sabinene		(+)-Borneol & (-) Borneol	
beta-Myrcene		alpha-Terpineol	327.26
(-)-beta-Pinene	109.36	gamma-Terpineol	
p-Mentha-1-5-diene		Nerol	
(1S)-(+)-3-Carene		Geraniol	
alpha-Terpinene	154.10	(+)-Pulegone	
Ocimere Peak 1	135.05	Geranyl Acetate	
(R)-(+)-Limonene	133.39	alpha-Cedrene	
Ocimere Peak 2	490.47	trans-Caryophyllene	145.82
Eucalyptol	1444.08	alpha-Humulene	
gamma-Terpinene	392.71	Valencene	
Sabinene Hydrate		cis-Nerolidol	
Terpinolene		trans-Nerolidol	
Linalool	1242.75	Guaiol	
(+)-Fenchone & L(-)-Fenchone		(-)-Caryophyllene Oxide	
(1R)-Endo-(+)-Fenchyl		(+)-Cedrol	
(-)-Isopulegol		(-)-alpha-Bisabolol	
Camphor & (1S)-(-)-Camphor	188.90		

Empty result indicates data is less than detection limit. Reporting Limit is roughly 40 ug/g depending on amount extracted.



Altitude Consulting, LLC utilizes NIST traceable Reference Standards and Certified Reference Material to calibrate analytical instruments along with proven analytical methods. The methods are applied in the most ethical manner following good laboratory practice guidelines. The results of this report are based solely on the sample submitted and cannot be reproduced.

This report expires 30 days after analysis date.